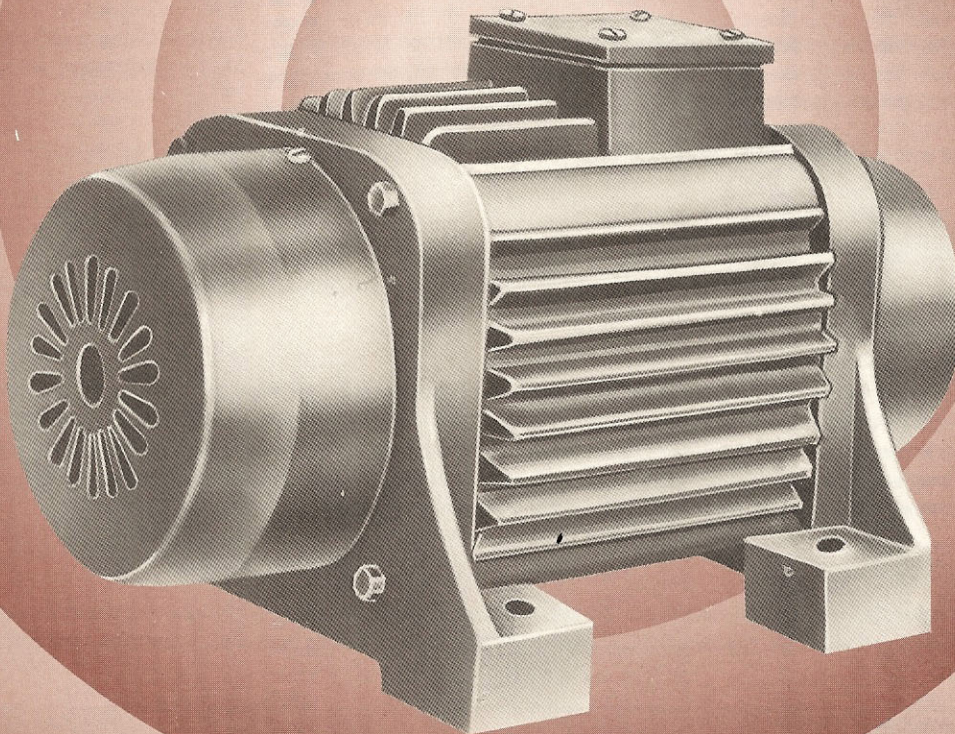




ROTARY VIBRATORS



Shakti ENGINEERS

FACTORY : 8-F, NEW EMPIRE INDUSTRIAL ESTATE (A), J. B. NAGAR, KONDIVITA ROAD, ANDHERI (E) BOMBAY - 400 059

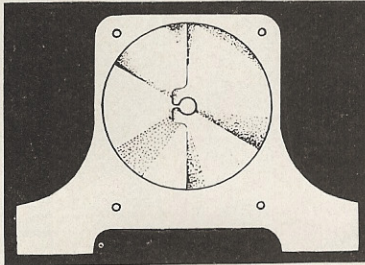
• TEL : 821 9870 FAX. 91-22-835 1397 • EMAIL : shaktiengr@vsnl.com • WEBSITE : www.shaktiengrs.com

SHREE SHAKTI ROTARY VIBRATORS

SHAKTI ENGINEERS are presenting a new series of ROTARY VIBRATORS to meet the requirements of various industries where in material handling plays a major role.

SHREE SHAKTI VIBRATORS help to empty, ventilate, dose, remove dust, dehydrate, convey, loosen, mix, test, clean, screen, classify, compact, distribut, feed etc. These vibrators therefore have a very wide application in following industries + Mining + Fertiliser + Power stations + Foundries + Chemical Industry + Pharmaceuticals + Foodstuff etc.

SHREE SHAKTI VIBRATORS are suitable for mounting on Construction Machines, Bin and Storage silo, Plants, Dehydration Screens, Vibrating feeders and Tables, Conveyors, Moulds and Form work, Surface finishing machines, Crushers, Rammers. and many other applications.



SHREE SHAKTI ROTARY VIBRATORS are totally enclosed, surface cooled units operating on 400/440 volts 3 phase, 50 cycles, A.C. Supply. The vibrating frequency depends on the revolutions of the rotary unit. You can choose from four ranges available viz : 2800, 1400, 900, 700 vibrations per minute. The amplitude of these vibrations is between 2 mm to 4 mm and the Centrifugal Force can be adjusted from Maximum to zero by manipulating the relative positions of the eccentric weights provided on either end. Various models are available giving a wide choice of Centrifugal Force, Frequency of Vibration, Mounting Position, Insulation etc. The customer is therefore assured of getting the most suitable vibrator to meet his requirements.

When used as a single unit, they impart circular vibrations. If directional vibrations are needed, two vibrators running in the opposite direction should be used.

SALIENT FEATURES

- 1) Sturdy and robust construction.
- 2) Heavy duty bearings for long trouble free service.
- 3) Totally enclosed construction keeps dust, dirt away from windings.
- 4) Low noise as compared to Electromagnetic Vibrators.
- 5) Centrifugal Force can be adjusted infinitely from zero to Maximum.
- 6) Amplitude of vibration can be controlled.
- 7) Low maintainance due to absence of belts, pulleys, chains, sprockets etc.

Mechanical Construction.

The vibrator body, endshields are of robust design and the made out of graded cast iron. The material for shafts is alloy steel of ample size to transmit the rated vibratory forces. The ball / roller bearings used are heavy duty to give a long trouble free performance. The total design of SHREE SHAKTI ROTARY VIBRATORS is aimed at obtaining MAXIMUM VIBRATIONS WITH MINIMUM POWER.

The protection class is IP 44 (Totally enclosed construction). The windings consist of super enamelled copper wires, slot and phase insulation, varnish etc as specified for "B" class.

Special Purpose Vibrators.

We also undertake the manufacture of ROTARY VIBRATORS for verticals mounting, special protection class IP 55 (Hose proof), special class of insulation (F.H.) etc.

PRECAUTIONS :

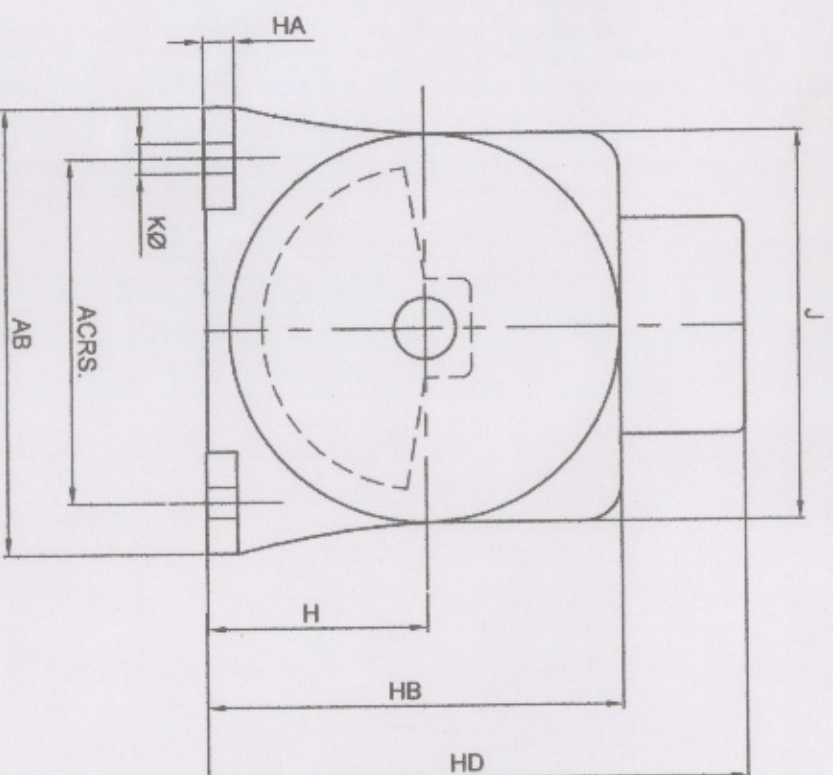
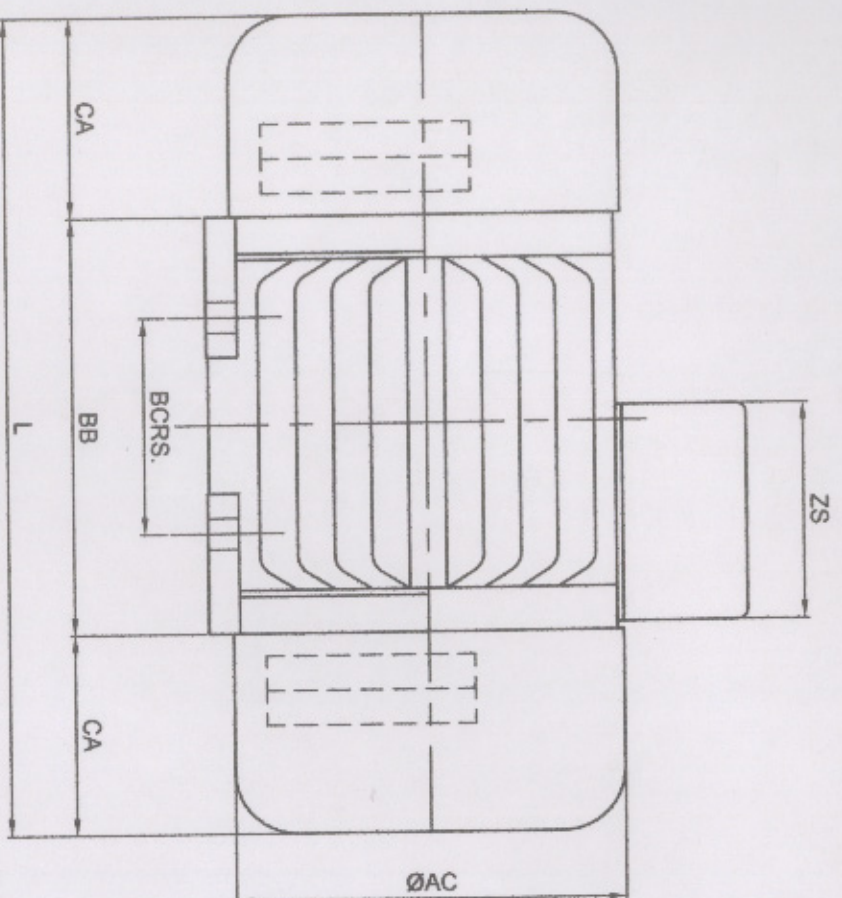
In order to be able to choose the proper sense of revolution, not only the force of vibration but also the output of the vibrator has to be taken into consideration.. If no special calculation is made for the vibrator, the temperature of the vibrator must be checked during the first hour of operation. The outward temperature of the vibrator must not exceed 80°C. If the temperature becomes higher than 80°C due to overload, either the setting for Centrifugal Force should be brought down or a much powerful vibrator has to be used. In order to avoid overload, it is necessary to mount a thermal circuit breaker, which can be supplied at extra cost. Since the temperature sensing elements are to be embedded in the winding itself, the order for this overload protection has to be given along with the vibrator.

Securing the VIBRATOR.

The Vibrator should be fixed to a well faced plate with high tensile bolts of adequate size and secured tightly by means of nuts and lock washers. These nuts should be tightened for the first time after about four working hours of the vibrator. Further checks are to be made every week. A complete fastner kit can be supplied with the vibrator at an extra cost.

OUR OTHER PRODUCTS :-

- Motorised vibratory feeders and screens.
- Belt conveyors for various applications,
- Impact idlers for Heavy duty applications
- self aligning, swivelling types also.



FRAME SIZE	B	A	HA	BB	AB	ACØ	H	ZS	L	HD	HB	KØ	J	CA
V / 56 - 46	60	90	10	80	115	83	46	-	152	90	-	7	-	36
V / 40 - 56	60	75	8	111	100	74	46	20	149	90	85	7	86	19
V / 63S - 71	70	112	10	135	145	127	71	70	265	175	135	10	127	65
V / 63L - 71	85	112	10	157	145	127	71	70	287	175	135	10	127	65
V / 71 - 80	100	180	40	192	222	127	71	70	322	180	140	10	130	65
V / 80 - 90	100	150	12	191	190	140	90	75	321	220	170	10	155	65
V / 90S - 112	85	190	15	175	235	140	95	75	305	230	175	13	155	65
V / 90L - 112	100	190	15	203	235	140	95	75	333	230	175	13	155	65
V / 100 - 112	130	200	22	247	240	175	112	95	403	251	210	14	198	78
V / 112 - 132	150	225	25	263	270	242	132	95	487	283	247	17	230	112
V / 132 - 160	210	350	65	393	412	270	200	110	703	380	340	25	280	155
V / 160 - 200	210	350	65	384	412	270	200	110	704	-	340	25	280	160

Shakti ENGINEERS

8F, New Empire Ind. Estate (A)

J.B. Nagar Kondivita Lane

Andheri (East) Mumbai-400 059

E-mail : shaktiengr@vsnl.com

Web : www.shaktiengr.com

Tel. : 022-2821 9870

Fax. : 022-2835 1397

DIMENSIONS FOR ROTARY VIBRATORS All Dimensions are in mm Subject to change without notice as cont. development is going on.